

# COMMERCIAL PROPERTY



## TORUS

[torus-technology.com](https://torus-technology.com)

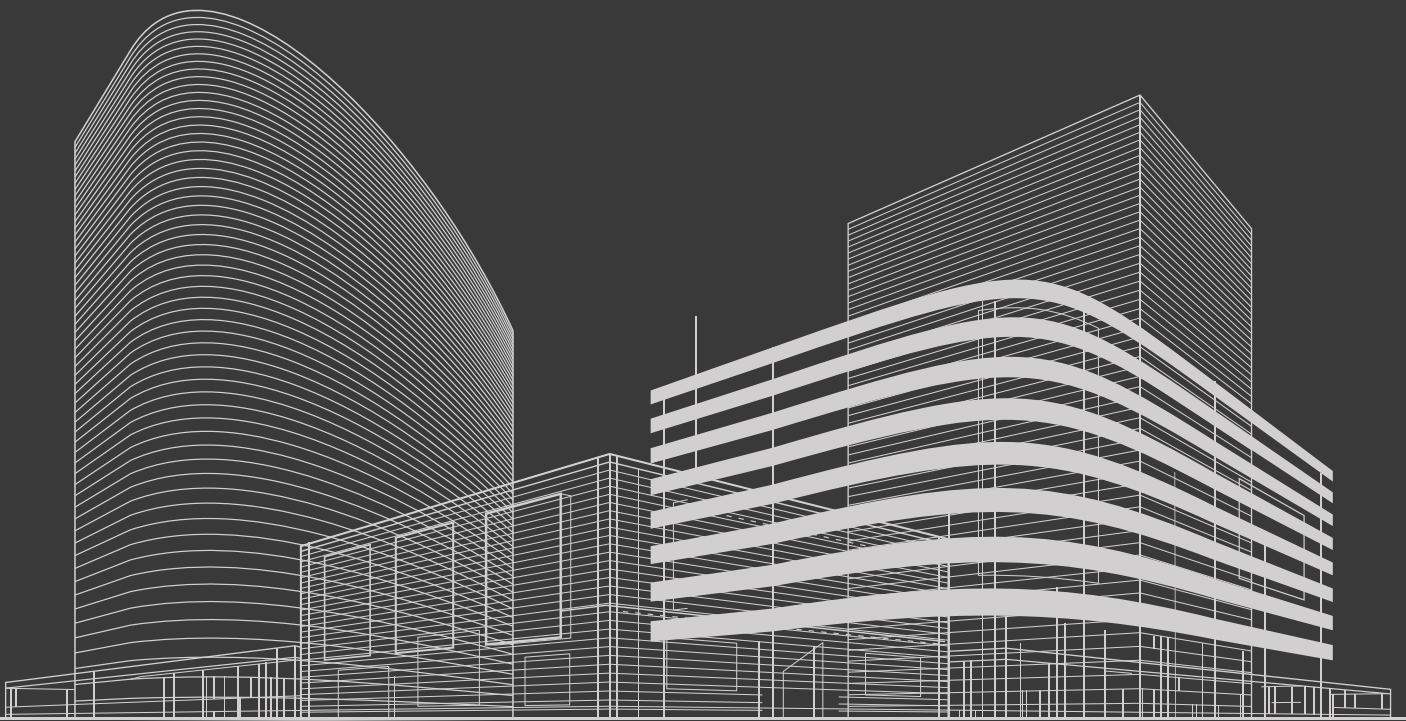
CLOUD-NATIVE ACCESS CONTROL FOR KEYS



# KEEPING TRACK OF THE PROPERTY KEY MAZE

In the property industry, every key unlocks critical access. But with so many keys in so many places, it's all too easy for them to go missing.

Uncontrolled access to keys can result in severe consequences, including safety risks, theft, operational disruption administrative burden, non-compliance with industry regulations. Not to mention reputational damage = lost business.



Grand Master and Master keys



Conference and Meeting Rooms



Executive, Private and Tenant Offices



Parking Garages and Service Areas



Main Entrances and Lobby Areas



Server and IT Rooms



Storage, Lockers and Supply Rooms



Utility and Maintenance Rooms

# THE PROBLEM WITH KEYS

A missing key is more than just an inconvenience. It's a risk. Because in property, if the right key is lost or unavailable, the consequences can be severe.



## Escalating replacement costs

Regularly replacing missing keys and locks becomes very expensive, very quickly.



## Wasted time and resources

Managing keys takes away from other important tasks.



## Health and safety hazards

When keys go missing or end up in the wrong hands, it puts safety on the line.



## High security risks

Physical vulnerabilities can expose sites to intrusions, potentially disrupting operations and leading to daily revenue losses.



## Operational inefficiencies

Manual key handling and traveling between sites - just to collect keys - increases staff downtime and reduces productivity.



## Non-compliance

Problematic key management goes against the industry standards concerning security and access.

# WHAT IS TORUS?

Torus is a cloud-native access control solution for keys. It's easy to use and scale across multiple sites - allowing you to manage your organization's keys, cards and tags with ease.

Since 2001, Torus has revolutionized key management in the property sector.

Harnessing the power and security of cloud-native technology, Torus will elevate the efficiency, security and safety of your workplace.

Torus is proven to mitigate security risks, enhance accountability, ensure authorized access and deliver rapid return on investment.

So, stop wasting time on manual key management. With Torus, you can have complete key control at your fingertips.



# COMPLETE CONTROL AT YOUR FINGERTIPS

Control every key across your property portfolio and ensure only authorized staff access critical areas. You'll also benefit from a secure, scalable system designed to meet the demands of the industry.



## Easy to install

With POE, DHCP and no local server requirements, Torus can be fully installed within an hour.



## Cloud native

Seamlessly connect key cabinets without any IT hassle and access the software from anywhere.



## Certified security

Gain peace of mind with a team of over 3500 Microsoft cybersecurity experts working to safeguard your data.



## Remote key control

Make fast, informed decisions with insightful dashboards and reports accessible from anywhere, anytime.



## Unlimited scalability

Use one account for unlimited keys, cabinets and buildings – perfect for organizations with multiple locations.



## SMS and email alerts

Resolve security issues faster and keep the right people informed with real-time notifications.



## Return on investment

Eliminate labor costs, contractor fees and the price of changing locks.



## Solution for the future

Torus keeps evolving with over-the-air updates – making it a smart, long-term investment.

# DELIVERING SAFETY, SECURITY AND OPERATIONAL EFFICIENCY TO YOUR SITE

## SAFETY

### Exception reporting

Torus reports on overdue keys, changes to access rights, unauthorized access attempts and deleted users

### Full audit trails

We audit every key event or action that takes place in your organization so users are always accountable

### Electrical safety

Torus has achieved the highest levels of electrical and radio frequency safety certifications

## SECURITY

### Multi-custody keys

We ensure dual or multi-authentication to access critical keys and assets.

### Access schedules

Torus grants or restricts access to keys based on day and/or time restrictions.

### Real-time alerts

Torus sends you real-time SMS and email alerts on key transactions.

## EFFICIENCY

### Automated access

Torus ensures keys are available 24/7 to authorized users - no need for security personnel to manage keys manually.

### Key return assurance

Torus ensures that keys are always returned and never leave the site.

### Seamless integration

Torus integrates with existing access control and other third-party systems.

**Brookfield**

**CBRE**

**Centuria**

**dexus**





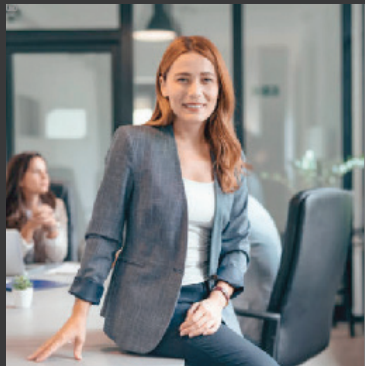
# TORUS MAKES EVERYONE'S LIVES EASIER



## CLEANERS AND TENANTS

Torus ensures cleaners and tenants have secure, 24/7 access to critical infrastructure without delays.

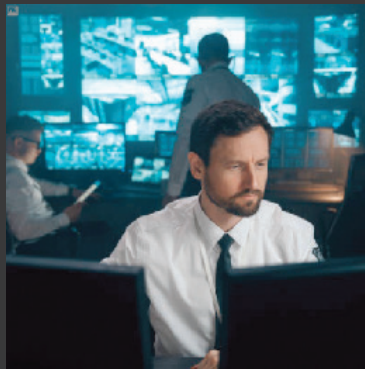
This means they efficiently perform their jobs without requiring facility managers to issue them keys. And they don't need to waste time traveling to a central location to receive and return keys.



## FACILITY MANAGERS

Torus delivers control over keys and improves efficiency across unlimited sites – making a manager's job much easier.

With automated alerts and full reporting, staying on track of your keys has never been simpler. And they don't have to waste time issuing keys and getting them back.



## SECURITY

Torus enhances security with exception reporting, real-time alerts and multi-factor authentication, preventing unauthorized access to your facilities.

Plus, detailed schedules help maintain compliance with industry regulations, ensuring key control at every level.



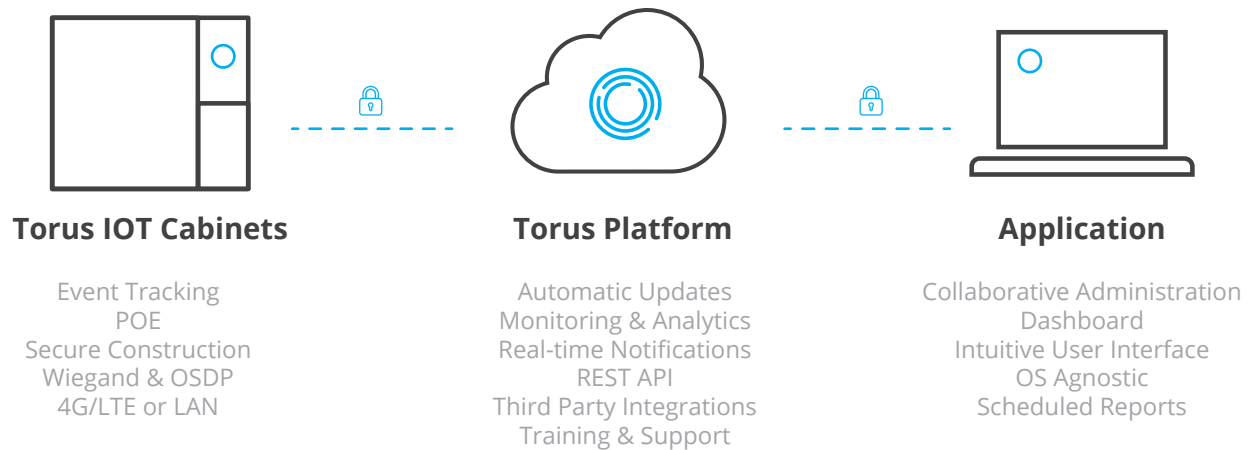
## CONTRACTORS

With Torus, contractors receive controlled, time-limited access to keys without compromising security.

What's more, with automated schedules and real-time reporting at their fingertips, your administrators will always know who's working when and from where.

# HIGH SECURITY CLOUD INFRASTRUCTURE

Built using the power and security of Microsoft Azure, Torus provides an enterprise-grade key management system.



## Manufacturer

Torus is designed and manufactured by CIC Technology Pty Ltd, an ISO 27001 & 9001 certified organization.



## Data Security

Torus software inherits Microsoft Azure's multi-layered security, deployed across physical data centers, infrastructure and operations. It is supported by the largest team of cybersecurity experts in the world.

## Certifications

Tier 4	CSA	PCI
ISO/IEC 27001	SOC 1	DSS
ISO/IEC 27018	SOC 2	HIPPA



# CBRE SAVES 21,456 HOURS A YEAR - ACROSS 36 SITES ACHIEVING A 2-MONTH ROI

CBRE is a management partner for the ISPT (Investment Superannuation Property Trust) which owns a \$50 billion portfolio of over 150 properties. These include commercial, retail and logistics assets.

THE CHALLENGE	THE SOLUTION	THE OUTCOME
<p>Without an access control solution for keys in place, managing keys across multiple sites was inefficient, frustrating, and presented unacceptable security risks. Keys were manually handled by facility managers.</p> <p>Staff and contractors could access keys without authorization. Issues included:</p> <ul style="list-style-type: none"> <li>✗ Lack of key control</li> <li>✗ No visibility and accountability</li> <li>✗ Security risks</li> <li>✗ Time wasted travelling to sites and manually tracking keys</li> </ul>	<p>CBRE chose Torus to provide an integrated key management system which provides a seamless solution for visitors and contractors to access keys.</p> <ul style="list-style-type: none"> <li>✓ 36 Torus cabinets installed across 36 sites.</li> <li>✓ Real-time accountability and automated alerts to staff and managers for unreturned keys</li> <li>✓ Improved productivity and operational efficiency</li> <li>✓ Slashed wasted time on manual handovers</li> <li>✓ Remote key management</li> </ul>	<p>CBRE transformed its operations, achieving significant time and cost savings.</p> <p>As a result, it:</p> <ul style="list-style-type: none"> <li>+ Saved 21,456 hours per year across 36 sites</li> <li>+ \$51K a year in reduced labor costs per site</li> <li>+ Achieved ROI in just 2 months</li> <li>+ \$6K a year saved on replacing locks and keys per site</li> <li>+ Reduced administrative burden with seamless automation</li> </ul>



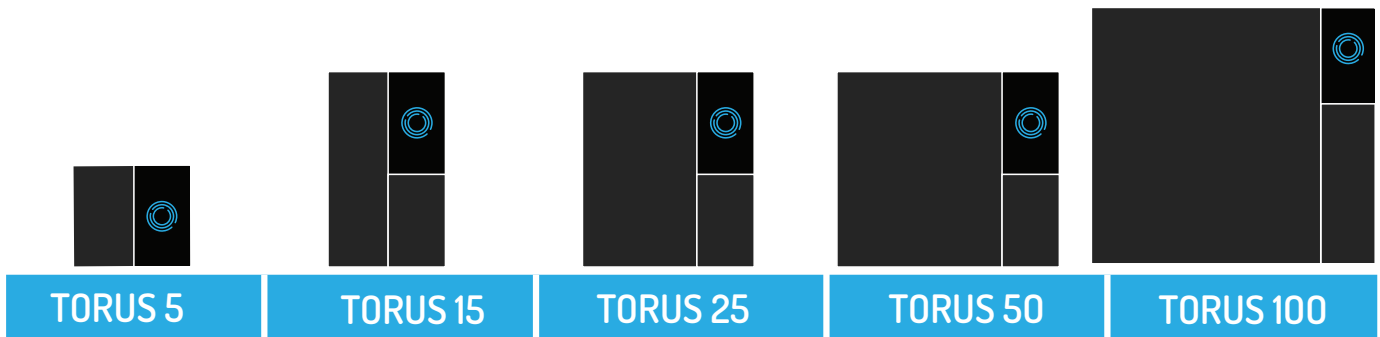
*Torus has delivered a sophisticated, reliable solution that has transformed the way we manage keys across our properties. We now have full control over key access across our portfolio, eliminating inefficiencies and security risks that previously caused daily frustrations.*

Operations Manager, **CBRE**

**CBRE**



# THE NITTY-GRITTY



CAPACITY	5 key sets	15 key sets	25 key sets	50 key sets	100 key sets
WEIGHT	33lbs	77lbs	92lbs	119lbs	196lbs
HEIGHT	13 1/8 "	26 3/4 "	26 3/4 "	26 3/4 "	37 "
WIDTH	19 1/8 "	22 1/4 "	25 3/4 "	34 1/4 "	40 3/4 "
DEPTH	7 1/4 "	7 1/4 "	7 1/4 "	7 1/4 "	7 1/4 "

## ACCESSORIES



EMERGENCY  
READER DEVICE (ERD)



BIOMETRIC  
READERS



TAMPER-PROOF  
KEY RINGS



PROX  
READERS

Get in touch to learn more about how Torus  
can revolutionize your property.

(833) 939-3355

torus-technology.com  
sales@torus-technology.com